



---

## CERTIFICATE OF APPROVAL

### No CF 10392

---

This is to certify that, in accordance with  
TS00 General Requirements for Certification of Fire Protection Products  
The undermentioned products of

**WOOD INTERNATIONAL AGENCY LIMITED**  
**Wood House, 16 King Edward Lane, Brentwood, Essex,**  
**CM14 4HL United Kingdom**

**Tel: 01277 232991**

Have been assessed against the requirements of the Technical Schedule(s)  
denoted below and are approved for use subject to the conditions  
appended hereto:

---

**CERTIFIED PRODUCT**  
**Marksman 44 FD30**  
**Timber Door Assembly System**

**TECHNICAL SCHEDULE**  
**TS10 Fire Resisting Door**  
**Assemblies with Non**  
**Metallic Leaves**

**Signed and sealed for and on behalf of Warringtonfire Testing and Certification Limited**

**Paul Duggan**  
**Certification Manager**

**Issued:** 27<sup>th</sup> March 2026  
**Audit Test Frequency:** Every 5 years  
**Valid to:** 26<sup>th</sup> March 2031





---

## CERTIFICATE No CF 10392

### WOOD INTERNATIONAL AGENCY LIMITED

---

#### WOOD INTERNATIONAL AGENCY LIMITED – MARKSMAN 44

This approval relates to the use of the above doors in providing fire resistance of 30 minutes insulation (if incorporating not more than 20% of uninsulating glass) and 30 minutes integrity as defined in BS 476: Part 22. Subject to the undermentioned conditions, the doors would be expected to meet the relevant requirements of BS 9999 for FD30 door assemblies when used in accordance with the provisions therein.

1. This certification is provided to the client for its own purposes, and we cannot opine on whether it will be accepted by Building Control authorities or any other third parties for any purpose.
2. The doors are approved on the basis of:
  - i) Initial type testing
  - ii) A design appraisal against TS10
  - iii) Inspection and surveillance of factory production control
  - iv) Certification under a CERTIFIRE approved Quality Management System
  - v) Audit testing in accordance with TS10
3. The doors comprise cellulosic cored leaves in various finishes for use with timber frames, with intumescent edge seals (ITT FD30).
4. This approval is applicable to both complete door assemblies and door leaves. Where the door is not supplied in a fully fitted form it is a condition of this approval that an agreed Data Sheet accompanies the product and is complied with in its entirety. Failure to do so will invalidate this approval and may jeopardise the fire performance of the door.
5. This approval is applicable to latched and unlatched, single-acting, single and double-leaf, ITT assemblies with or without overpanels, at leaf dimensions up to those given in the tables below:
6. Glazing shall only be undertaken by the door manufacturer, or a CERTIFIRE approved Licensed Door Processor, and shall be in accordance with the Data Information Sheet and Construction Specification. No site cutting or glazing of apertures is permitted.
7. Hardware items, including closing devices and intumescent fire seals, shall be as specified in the Data Sheet.
8. The door assembly shall be mechanically fixed to wall constructions having a fire resistance of at least 30 minutes.

Signed  
Page 2 of 4  
E014520-1

EWC-QU-FT-731 (Issue 3)

Issued: 27<sup>th</sup> March 2026  
Valid to: 26<sup>th</sup> March 2031



## CERTIFICATE No CF 10392

### WOOD INTERNATIONAL AGENCY LIMITED

#### WOOD INTERNATIONAL AGENCY LIMITED – MARKSMAN 44

9. Labels to the CERTIFIRE design, or approved by CERTIFIRE, referencing CERTIFIRE and CERTIFIRE Ref. No. CF 10329 and FD30 classifications resistance shall be affixed to each door in the prescribed position.
10. This approval relates to on-going production. The product and/or its immediate packaging is identified with the manufacturer's name, the product name or number, the CERTIFIRE name or name and mark, together with the CERTIFIRE certificate number and application when appropriate.

Max Permitted Leaf Sizes – ISL Therm-A-Seal (CF387) Intumescent Seals			
Door Assembly Configuration	Maximum Height (mm)	Maximum Width (mm)	Maximum Area (m <sup>2</sup> )
Single-Acting, Single-Leaf Latched Only	2656 (at 1003 wide)	1182 (at 2254 high)	2.66
Single-Acting, Single-Leaf Latched / Unlatched	2236 (at 934 wide)	957 (at 2183 high)	2.09

**Table 1**

Max Permitted Leaf Sizes – Mann McGowan Pyrostrip 500P (CF356) Intumescent Seals			
Door Assembly Configuration	Maximum Height (mm)	Maximum Width (mm)	Maximum Area (m <sup>2</sup> )
Single-Acting, Single-Leaf Latched Only	2207 (at 933 wide)	943 (at 2183 high)	2.06
Single-Acting, Double-Leaf Unlatched Active Leaf Unbolted Passive Leaf	2212 (at 933 wide)	946 (at 2183 high)	2.06

**Table 2**

Max Permitted Leaf Sizes – Lorient Type 617 (CF341) Intumescent Seals			
Door Assembly Configuration	Maximum Height (mm)	Maximum Width (mm)	Maximum Area (m <sup>2</sup> )
Single-Acting, Single-Leaf Latched / Unlatched	2040 (at 926 wide)	926 (at 2040 high)	1.89
Single-Acting, Double-Leaf Unlatched Active Leaf Unbolted Passive Leaf	2630 (at 933 wide)	1115 (at 2200 high)	2.45

Signed  
Page 3 of 4  
E014520-1

EWC-QU-FT-731 (Issue 3)

Issued: 27<sup>th</sup> March 2026  
Valid to: 26<sup>th</sup> March 2031



## CERTIFICATE No CF 10392 WOOD INTERNATIONAL AGENCY LIMITED

Table 3

### WOOD INTERNATIONAL AGENCY LIMITED – MARKSMAN 44

Max Permitted Leaf Sizes – Pyroplex Rigid Box (CF355) Intumescent Seals			
Door Assembly Configuration	Maximum Height (mm)	Maximum Width (mm)	Maximum Area (m <sup>2</sup> )
Single-Acting, Single-Leaf Latched / Unlatched	2206 (at 933 wide)	936 (at 2200 high)	2.06
Single-Acting, Double-Leaf Unlatched Active Leaf Unbolted Passive Leaf (Option 1 - 15 mm by 4 mm seals)	2663 (at 933 wide)	1138 (at 2183 high)	2.48
Single-Acting, Double-Leaf Unlatched Active Leaf Unbolted Passive Leaf (Option 2 - 20 mm by 4 mm seals)	2686 (at 1129 wide)	1183 (at 2564 high)	3.03

Table 4

Max Permitted Leaf Sizes – Sealed Tight solutions STS154 (CF5820) Intumescent Seals			
Door Assembly Configuration	Maximum Height (mm)	Maximum Width (mm)	Maximum Area (m <sup>2</sup> )
Single-Acting, Single-Leaf Latched / Unlatched	2683 (at 933 wide)	1147 (at 2183 high)	2.50

Table 5

Note: Under no circumstances must the maximum height, maximum width or maximum area be exceeded without separate CERTIFIRE approval.

Rebated meeting edges are not permitted.

Secondary leaves for unequal pairs shall be a min 50% of the primary leaf width.

Signed  
Page 4 of 4  
E014520-1

EWC-QU-FT-731 (Issue 3)

Issued: 27<sup>th</sup> March 2026  
Valid to: 26<sup>th</sup> March 2031

**WOOD INTERNATIONAL AGENCY LIMITED  
MARKSMAN 44 FD30 TIMBER DOOR ASSEMBLIES  
CF 10392 DATA SHEET**

**1. General**

This door leaf has been fire tested and is certified by CERTIFIRE as being capable of providing fire resistance of 30 minutes integrity and 30 minutes insulation (if incorporating not more than 20% of uninsulated glass) as defined in BS 476: Part 22, when installed in accordance with the following conditions. Subject to these, the door will meet the relevant requirements of BS 9999 for FD30 when used in accordance with the provisions therein.

In recognition of this, the leaf carries a prefixed label on the top or hanging edge of the door, issued under the terms of the CERTIFIRE scheme. This label uniquely identifies the door leaf, the manufacture of which complies with a CERTIFIRE approved Quality Management System and is subject to on-going surveillance. This label shall not be removed.

It is emphasised that the certification is conditional upon the following instructions being complied with in their entirety. Failure to do so will invalidate this approval and may jeopardise the fire performance of the door. Door assemblies supplied pre-fitted with components by Wood International Agency Limited may be considered to meet the requirements in respect of those items.

**2. Door Leaf Dimensions**

This approval is applicable to single-action, single and double-leaf, latched and unlatched, assemblies at leaf dimensions up to those detailed within the tables below.

<b>Max Permitted Leaf Sizes – ISL Therm-A-Seal (CF387) Intumescent Seals</b>			
<b>Door Assembly Configuration</b>	<b>Maximum Height (mm)</b>	<b>Maximum Width (mm)</b>	<b>Maximum Area (m<sup>2</sup>)</b>
Single-Acting, Single-Leaf Latched Only	2656 (at 1003 wide)	1182 (at 2254 high)	2.66
Single-Acting, Single-Leaf Latched / Unlatched	2236 (at 934 wide)	957 (at 2183 high)	2.09
<b>Table 1</b>			

<b>Max Permitted Leaf Sizes – Mann McGowan Pyrostrip 500P (CF356) Intumescent Seals</b>			
<b>Door Assembly Configuration</b>	<b>Maximum Height (mm)</b>	<b>Maximum Width (mm)</b>	<b>Maximum Area (m<sup>2</sup>)</b>
Single-Acting, Single-Leaf Latched	2207 (at 933 wide)	943 (at 2183 high)	2.06
Single-Acting, Double-Leaf Unlatched Active Leaf Unbolted Passive Leaf	2212 (at 933 wide)	946 (at 2183 high)	2.06
<b>Table 2</b>			

Note: Under no circumstances must the maximum height, maximum width or maximum area be exceeded without separate CERTIFIRE approval.  
Rebated meeting edges are not permitted  
Secondary leaves for unequal pairs shall be a min 50% of the primary leaf width.

<b>Max Permitted Leaf Sizes – Lorient Type 617 (CF341) Intumescent Seals</b>			
<b>Door Assembly Configuration</b>	<b>Maximum Height (mm)</b>	<b>Maximum Width (mm)</b>	<b>Maximum Area (m<sup>2</sup>)</b>
Single-Acting, Single-Leaf Latched / Unlatched	2040 (at 926 wide)	926 (at 2040 high)	1.89
Single-Acting, Double-Leaf Unlatched Active Leaf Unbolted Passive Leaf	2630 (at 933 wide)	1115 (at 2200 high)	2.45
<b>Table 3</b>			

<b>Max Permitted Leaf Sizes – Pyroplex Rigid Box (CF355) Intumescent Seals</b>			
<b>Door Assembly Configuration</b>	<b>Maximum Height (mm)</b>	<b>Maximum Width (mm)</b>	<b>Maximum Area (m<sup>2</sup>)</b>
Single-Acting, Single-Leaf Latched / Unlatched	2206 (at 933 wide)	936 (at 2200 high)	2.06
Single-Acting, Double-Leaf Unlatched Active Leaf Unbolted Passive Leaf (Option 1 - 15 mm by 4 mm seals)	2663 (at 933 wide)	1138 (at 2183 high)	2.48
Single-Acting, Double-Leaf Unlatched Active Leaf Unbolted Passive Leaf (Option 2 - 20 mm by 4 mm seals)	2686 (at 1129 wide)	1183 (at 2564 high)	3.03
<b>Table 4</b>			

<b>Max Permitted Leaf Sizes – Sealed Tight solutions STS154 (CF5820) Intumescent Seals</b>			
<b>Door Assembly Configuration</b>	<b>Maximum Height (mm)</b>	<b>Maximum Width (mm)</b>	<b>Maximum Area (m<sup>2</sup>)</b>
Single-Acting, Single-Leaf Latched / Unlatched	2683 (at 933 wide)	1147 (at 2183 high)	2.50
<b>Table 5</b>			

Note: Under no circumstances must the maximum height, maximum width or maximum area be exceeded without separate CERTIFIRE approval.

Rebated meeting edges are not permitted

Secondary leaves for unequal pairs shall be a min 50% of the primary leaf width.

### 3. Door Frame

To be any of the following:-

Standard frames	<b>Option 1</b>	
	Material:	Softwood or hardwood (solid)
	Density:	450 kg/m <sup>3</sup> minimum.
	Dimensions:	70 mm by 30 mm minimum.
	Door Stop:	12 mm deep pinned, screwed or rebated from solid (min 450 kg/m <sup>3</sup> ) Where the stop is rebated from solid the overall frame thickness must be increased by 12 mm to accommodate the 12 mm rebate depth.
	Note:	The door frame may optionally include a maximum 3 mm by 3 mm chamfer detail to the internal edges of the jambs/head, adjacent to the door leaf perimeter. Chamfers shall not be applied to the rear of the frame adjacent to the supporting construction, or to the joints between the frame jambs and head.
	<b>Option 2</b>	
	Material:	MDF
	Density:	654 kg/m <sup>3</sup> minimum.
	Dimensions:	70 mm by 30 mm minimum
	Door Stop:	12 mm deep pinned, screwed or rebated from solid (min 720 kg/m <sup>3</sup> ) Where the stop is rebated from solid the overall frame thickness must be increased by 12 mm to accommodate the 12 mm rebate depth.
	Note:	The door frame may optionally include a maximum 3 mm by 3 mm chamfer detail to the internal edges of the jambs/head, adjacent to the door leaf perimeter. Chamfers shall not be applied to the rear of the frame adjacent to the supporting construction, or to the joints between the frame jambs and head.
	<b>Option 3</b>	
	Material:	Softwood or hardwood (finger jointed and laminated)
	Density:	450 kg/m <sup>3</sup> minimum.
Dimensions:	70 mm by 30 mm minimum.	
Door Stop:	12 mm deep pinned, screwed or rebated from solid (min 450 kg/m <sup>3</sup> ) Where the stop is rebated from solid the overall frame thickness must be increased by 12 mm to accommodate the 12 mm rebate depth.	
Note:	The door frame may optionally include a maximum 3 mm by 3 mm chamfer detail to the internal edges of the jambs/head, adjacent to the door leaf perimeter. Chamfers shall not be applied to the rear of the frame adjacent to the supporting construction, or to the joints between the frame jambs and head.	
Jointing:	Butt joints, mortice and tenon, mitred or half lapped joints with the head screw fixed to the jambs using two steel screws	
Door to frame gaps:	Not to exceed 4 mm except at threshold where up to 8 mm is permitted. Meeting stile gap not to exceed 4 mm. Please note that a reduced threshold gap may be required to comply with smoke leakage requirements.	

#### 4 Decorative finishes

- Any additional timber veneer up to 2 mm thick may be applied to the face only (application to the door edge is not permitted).
- Any additional non-metallic facing material, e.g., plastic laminate up to 2mm thick applied to the face only (application to the door edge is not permitted).

#### 5 Lippings

Lippings:	<b>Option 1</b>	
	Material:	Hardwood (solid only)
	Density:	640 kgm <sup>3</sup> minimum
	Thickness:	Minimum 6 mm / Maximum 25 mm Lippings may be trimmed down on site to a minimum thickness of 5 mm.
	Adhesive:	Henkel Technomelt PUR 270/9 ME, Wurth Rapid PUR, Wurth Rapid PU, Wurth D4 PU, Wurth Rapid MCPU, Norboard Caberfix D4 PU or PVA
	Configuration:	Door leaves shall be lipped to the vertical edges. Doors may be optionally lipped to the top & bottom edges.
	Features:	Lippings may include 3 mm by 3 mm chamfers to the outer edges
	<b>Option 2</b>	
	Material:	Hardwood (solid only)
	Density:	484 kgm <sup>3</sup> minimum
	Thickness:	Minimum 8 mm / Maximum 25 mm Lippings may be trimmed down on site to a minimum thickness of 5 mm.
	Adhesive:	Henkel Technomelt PUR 270/9 ME, Wurth Rapid PUR, Wurth Rapid PU, Wurth D4 PU, Wurth Rapid MCPU, Norboard Caberfix D4 PU or PVA
	Configuration:	Door leaves shall be lipped to the vertical edges. Doors may be optionally lipped to the top & bottom edges.
	Features:	Not permitted
	<b>Option 3</b>	
	Material:	Edgeman EV650 engineered hardwood
	Density:	747 kgm <sup>3</sup> minimum
	Thickness:	Minimum 6 mm / Maximum 25 mm Lippings may be trimmed down on site to a minimum thickness of 5 mm.
	Adhesive:	Henkel Technomelt PUR 270/9 ME, Wurth Rapid PUR, Wurth Rapid PU, Wurth D4 PU, Wurth Rapid MCPU, Norboard Caberfix D4 PU or PVA
	Configuration:	Door leaves shall be lipped to the vertical edges. Doors may be optionally lipped to the top & bottom edges.
Features:	Lippings may include 3 mm by 3 mm chamfers to the outer edges	

**6. Overpanels and Sidepanels**

Flush overpanels are not permitted.

Overpanels / Sidepanels to be manufactured as per door leaf specification.

Transomed overpanels, manufactured to the same specification as the door leaves, may be included up to 1000 mm high, with a minimum 70 mm wide by 30 mm thick (plus additional planted stops) softwood or hardwood transom rail (in accordance with section 3).

Mullioned sidepanels, manufactured to the same specification as the door leaves, may be included up to 1000 mm wide, with a minimum 70 mm wide by 30 mm thick (plus additional planted stops) softwood or hardwood transom rail (in accordance with section 3).

Overpanels and sidepanels to be bedded against beads or the stop of the rebate and be screw fixed at minimum 400 mm centres, maximum 100 mm from each corner through the centre of the panel to a depth of at least 30 mm

Intumescent seals shall comply with the tables in section 11 of this Data Sheet and shall be fitted centrally to all for edges of the overpanel or within the reveal of the frame.

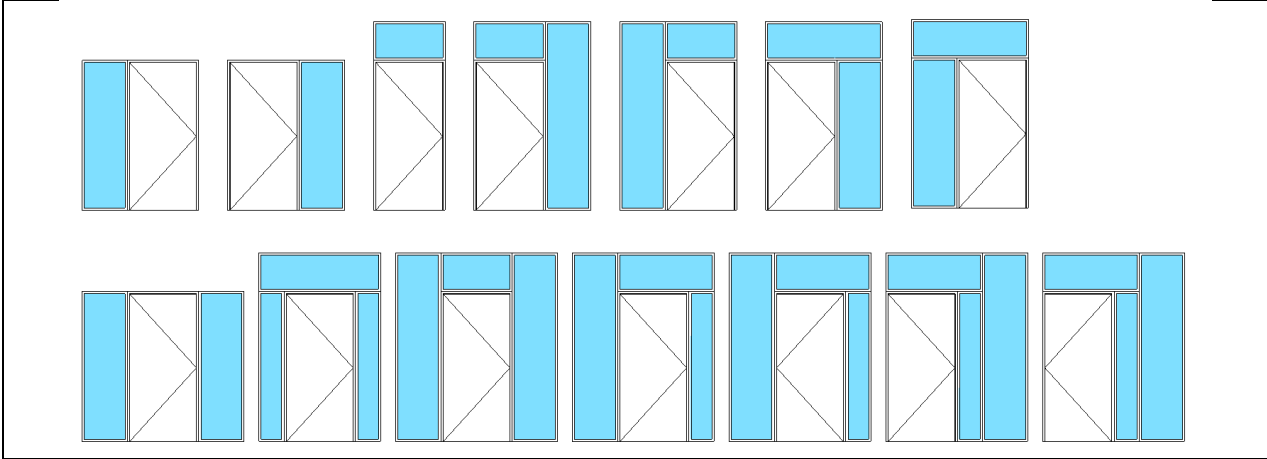
Entire overpanel may be glazed in accordance with point 7a below.

**7a. Glazed Fanlights - Integral**

Any CERTIFIRE approved glazing systems may be used providing the specification and installation details given in the appropriate certification documents are adhered to.

**7b. Glazed Fanlights and Sidelights – Coupled**

Coupled fanlights and sidelights are permitted in conjunction with single-action, single-leaf door assemblies, in the following configurations:



Each individual glazed sidelight incorporates an independent 4-sided frame, which is then coupled to the adjacent framing members.

As detailed above the overall assembly shall incorporate a maximum of one framed fanlight and two framed sidelight panels adjacent to either the lock edge or hang edge of the door assembly or alternatively may incorporate a single framed sidelight panel adjacent to both the lock edge and the hang edge of the door assembly.

Coupled sidelights shall have a maximum overall frame width of 1080 mm (at a maximum height of 2700 mm) or a maximum overall frame height of 3000 mm (at 973 mm wide) with a maximum overall frame area of 2.92 m<sup>2</sup>, subject to these dimensions being compliant with the appropriate Certifire certificate of approval for the glazed screens (adopting a policy of limiting dimensions to whichever is smaller).

The coupled fanlight shall have a maximum overall frame width of 2035 mm (at a maximum height of 478 mm) or a maximum overall frame height of 590 mm (at a maximum width of 1650 mm) with a maximum overall frame area of 0.95 m<sup>2</sup>, subject to these dimensions being compliant with the appropriate Certifire certificate of approval for the glazed screens (adopting a policy of limiting dimensions to whichever is smaller).

Any Certifire approved glazing system, relating to timber framed screens, may be used for the sidelight/screen element providing the specification and installation details given in the appropriate certification documents are adhered to with regard to maximum size associated with the glass, system, edge cover, bead specification, framing specification. etc.

Where the Certifire certificate of approval permits for the sidelight/screen permits the use of a transom rail within the framed sidelight, this option may be utilised, subject to compliance with the associated specification requirements and any additional limitations/requirements stated in the Certifire certificate of approval.

The width of the door frame and sidelight framing shall be the same, and therefore the door frame width shall be increased to suit the sidelight framing width, or the vice versa, depending on which is the larger.

The back-to-back joints between the frame jambs and the vertical framing element of the side screen will be tightly butted, with 2No 10 mm beads of Mann McGowan Pyromas Intumescent Acrylic sealant applied around the perimeter of the abutting framing sections, prior to them being mechanically fixed.

The joint between the abutting door frame and vertical framing element of the sidelight, can either be concealed by an architrave, or alternatively a maximum 1 mm by 1 mm chamfer may be applied to the abutting corners of the frame sections

The abutting frame elements shall be mechanically fixed using a double line of steel screws penetrating the adjacent element by at least half the depth of the abutting component.

The fixings shall be located at a maximum of 150 mm in from the top and bottom corners and at maximum 600 mm centres.

## **8. Supporting Construction**

The door assemblies are approved to be installed in brick, block, masonry, timber or steel stud supporting constructions of minimum overall thickness 85 mm, providing at least 30 minutes fire resistance and previously proven capable of supporting a fire door assembly for the required integrity period.

Where stud partitions are used these should be suitably constructed to provide a secure fixing for the door assemblies as recommended by the partition manufacturer.

Where brick, block, masonry walls are plasterboard faced, the plasterboard adjacent to the door assembly shall be mechanically fixed to ensure that it remains in-situ for the required integrity period.

## **9. Installation**

The opening may be lined with softwood or hardwood which shall be continuous and of minimum width, 85mm. Each door frame jamb to be fixed through to the wall at not less than four points with steel or nylon fixings at maximum 600 mm centres penetrating the wall to at least 50 mm. Timber based architraves are optional with no restrictions on size or fixing.

Door assemblies shall be installed as stated in BS 8214. Suitable CERTIFIRE approved lineal gap sealing systems may also be utilised to protect the frame/supporting construction gap, subject to the conditions contained within the relevant certificate.

The use of third party accredited installers provides a means of ensuring that installations have been conducted by knowledgeable contractors, to appropriate standards, thereby increasing the reliability of the anticipated performance in fire.

Door leaves may be trimmed to fit the frame by the following maximum amounts:

- Stiles (each): 3 mm (a minimum 5 mm lipping thickness shall be retained – see section 5)
- Top: No limit providing bottom lippings are not fitted, 3 mm if bottom lipping is fitted, noting that a minimum 5 mm lipping thickness shall be retained – see section 5.
- Bottom: No limit providing bottom lippings are not fitted, 3 mm if bottom lipping is fitted, noting that a minimum 5 mm lipping thickness shall be retained – see section 5.

Note that the maximum door to frame and door to threshold gaps specified shall not be exceeded, nor shall the door edge fitted with the CERTIFIRE label be trimmed since removal of the label will invalidate the certification.

The labelled edge may be subjected to minor 'shooting-in,' providing the label is not damaged or removed in the process, and the amount of material removed does not exceed that stated previously.

**10. Glazed Apertures**

All apertures to be factory prepared by Wood International Agency Limited, or a CERTIFIRE approved Licensed Door Processor. No site cutting of apertures permitted as this will invalidate the certification.

Doors may incorporate CERTIFIRE approved glazing systems subject to the conditions contained within the relevant CERTIFIRE certificate (e.g., maximum size associated with glass, system, edge cover, aperture lining requirements, etc.) and the maximum pane dimensions given below (whichever is smaller):

Aperture dimensions: Doors may incorporate one or more vision panels to the maximum sizes identified in the table below:

Area: Maximum total glazed area of 1.99 m<sup>2</sup> per leaf

Margins: 100 mm from the perimeter edge, 80 mm between apertures

Maximum Permitted Aperture Dimensions		
Max. Height (mm)	Max. Width (mm)	Max. Area (m <sup>2</sup> )
2352 (at 845 wide)	901 (at 2205 high)	1.99

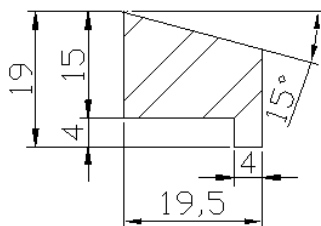
Aperture lining: See glazing tables below.  
When utilising alternative CERTIFIRE approved glazing systems the minimum aperture liner density requirements of the door and glazing system must be considered and whichever is the greater of the two must be utilised.

Setting blocks: Hardwood or non-combustible setting blocks shall be used to establish the correct edge cover, where required.

Note: Under no circumstances must the maximum height, maximum width or maximum area be exceeded without separate CERTIFIRE approval.  
Double-leaf door assemblies shall be similarly glazed.

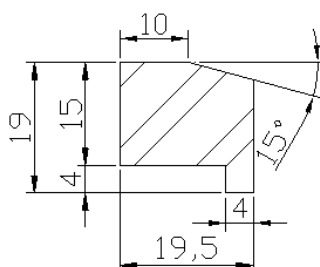
### Pyrobelite 7 (7.9 mm thick) - Non-insulating glass – Option 1

Intumescent System	Bead Dimensions	Bead Density	Fixings	Max. Height (mm)	Max. Width (mm)	Max. Area (m <sup>2</sup> )
Sealmaster Intumescent Foam Glazing Tape 10 mm by 5 mm	Splayed bolection bead 19 mm high by 19.5 mm wide overall with a 4 mm by 4 mm bolection and a 15 degree splay. (12 mm +2/-1 mm edge cover)	Hardwood minimum 640 kg/m <sup>3</sup>	38 mm long by 16swg pins or air fired brads at max 150 mm centres, max 50 mm in from the corners, fixed at 35 degrees to glass	2352 (at 845 wide)	901 (at 2205 high)	1.99
Lorient FF1	Splayed bolection bead 19 mm high by 19.5 mm wide overall with a 4 mm by 4 mm bolection and a 15 degree splay. (12 mm +2/-1 mm edge cover)	Hardwood minimum 696 kg/m <sup>3</sup>	38 mm long by 16swg pins or air fired brads at max 150 mm centres, max 50 mm in from the corners, fixed at 35 degrees to glass	1680 (at 400 wide)	480 (at 1400 high)	0.67
Lorient FF1	Splayed bolection bead 19 mm high by 19.5 mm wide overall with a 4 mm by 4 mm bolection and a 15 degree splay. (12 mm +2/-1 mm edge cover)	MDF minimum 696 kg/m <sup>3</sup>	38 mm long by 16swg pins or air fired brads at max 150 mm centres, max 50 mm in from the corners, fixed at 35 degrees to glass	883 (at 300 wide)	375 (at 706 high)	0.26

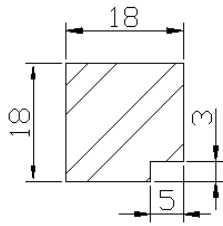


### Pyrobelite 7 (7.9 mm thick) - Non-insulating glass – Option 2

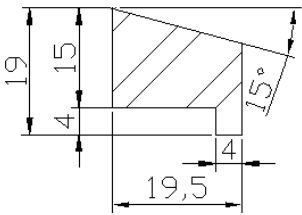
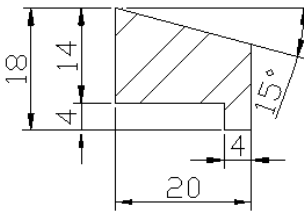
Intumescent System	Bead Dimensions	Bead Density	Fixings	Max. Height (mm)	Max. Width (mm)	Max. Area (m <sup>2</sup> )
Sealmaster Intumescent Foam Glazing Tape 10 mm by 5 mm	Chamfered bolection bead 19 mm high by 19.5 mm wide overall with a 4 mm by 4 mm bolection and a 15 degree splay. (12 mm +2/-1 mm edge cover)	Hardwood minimum 640 kg/m <sup>3</sup>	38 mm long by 16swg pins or air fired brads at max 200 mm centres, max 50 mm in from the corners, fixed at 35 degrees to glass	1801 (at 249 wide)	299 (at 1501 high)	0.45



### Pyrobelite 7 (7.9 mm thick) - Non-insulating glass – Option 3

Intumescent System	Bead Dimensions	Bead Density	Fixings	Max. Height (mm)	Max. Width (mm)	Max. Area (m <sup>2</sup> )
Intumescent Seals Limited Therm-A-Strip 10 mm by 2 mm with a hardwood aperture liner min 675 kg/m <sup>3</sup> at 44 mm by 8 mm	Square, flush bead 18 mm high by 18 mm wide overall with a 3 mm high by 5 mm deep quirk detail (15 mm +2/-1 mm edge cover)	Hardwood minimum 675 kg/m <sup>3</sup>	38 mm long by 16swg pins or air fired brads at max 200 mm centres, max 50 mm in from the corners, fixed at 35 degrees to glass	831 (at 151 wide)	189 (at 665 high)	0.13
						

### Pyroguard Advance 2-EW30/7-1 (7 mm thick) - Non-insulating glass – Option 4

Intumescent System	Bead Dimensions	Bead Density	Fixings	Max. Height (mm)	Max. Width (mm)	Max. Area (m <sup>2</sup> )
Sealmaster Intumescent Foam Glazing Tape 15 mm by 5 mm	Splayed bolection bead 19 mm high by 19.5 mm wide overall with a 4 mm by 4 mm bolection and a 15 degree splay. (12 mm +2/-1 mm edge cover)	Hardwood minimum 640 kg/m <sup>3</sup>	38 mm long by 16swg pins or air fired brads at max 150 mm centres, max 50 mm in from the corners, fixed at 35 degrees to glass	1680 (at 400 wide)	480 (at 1400 high)	0.67
Sealmaster Intumescent Foam Glazing Tape 15 mm by 5 mm	Splayed bolection bead 19 mm high by 19.5 mm wide overall with a 4 mm by 4 mm bolection and a 15 degree splay. (12 mm +2/-1 mm edge cover)	Hardwood minimum 640 kg/m <sup>3</sup>	38 mm long by 16swg pins or air fired brads at max 150 mm centres, max 50 mm in from the corners, fixed at 35 degrees to glass	1650 (at 250 wide)	275 (at 1500 high)	0.41
Sealmaster Intumescent Foam Glazing Tape 10 mm by 5 mm	Splayed bolection bead 18 mm high by 20 mm wide overall with a 4 mm by 4 mm bolection and a 15 degree splay. (12 mm +2/-1 mm edge cover)	Hardwood minimum 640 kg/m <sup>3</sup>	38 mm long by 16swg pins or air fired brads at max 130 mm centres, max 50 mm in from the corners, fixed at 35 degrees to glass	486 (at 405 wide)	486 (at 405 high)	0.20
 <p style="text-align: center;">Bead for use with Sealmaster Intumescent Foam Glazing Tape 15 mm by 5 mm</p>		 <p style="text-align: center;">Bead for use with Sealmaster Intumescent Foam Glazing Tape 10 mm by 5 mm</p>				

### Pyroguard EI30-1(B)1-38dB (15 mm thick) - Insulating glass – Option 5

Intumescent System	Bead Dimensions	Bead Density	Fixings	Max. Height (mm)	Max. Width (mm)	Max. Area (m <sup>2</sup> )
Sealmaster Intumescent Foam Glazing Tape 10 mm by 5 mm	Splayed bolection bead 20 mm high by 15 mm wide overall with a 4 mm by 4 mm bolection and a 14 degree splay. (12 mm +2/-1 mm edge cover)	Hardwood minimum 640 kg/m <sup>3</sup>	50 mm long by 16swg pins or air fired brads at max 150 mm centres, max 50 mm in from the corners.	1870 (at 296 wide)	370 (at 1496 high)	0.55

### 11. Intumescent Seals

CERTIFIRE certificated intumescent seals are required to be fitted to these doors as below, for door assemblies to BS476: Part 22 – classified as FD30

The specification of the seals will be in accordance with the following tables:

Intumescent Seals Limited Therm-A-Seal (CF387) – See Table 1 for Leaf Restrictions		
Door Assembly Configuration*	Position	Intumescent Type/Position
Single-Acting, Single-Leaf Latched Only	Head & vertical edges	Single 15 mm wide by 4 mm thick ISL Therm-A-Seal (CF387) intumescent seal positioned 15 mm from the opening face of the frame (within the frame reveal)
Single-Acting, Single-Leaf Latched / Unlatched	Head & vertical edges	Single 15 mm wide by 4 mm thick ISL Therm-A-Seal (CF387) intumescent seal positioned 15 mm from the opening face of the frame (within the frame reveal)

\*See Table 1 for size restrictions

Mann McGowan Pyrostrip 500P (CF356) Intumescent Seals – See Table 2 for Leaf Restrictions		
Door Assembly Configuration*	Position	Intumescent Type/Position
Single-Acting, Single-Leaf Latched / Unlatched	Head & vertical edges	Single 15 mm wide by 4 mm thick Mann McGowan Pyrostrip 500P (CF356) intumescent seal positioned 15 mm from the opening face of the frame (within the frame reveal)
Single-Acting, Double-Leaf Unlatched Active Leaf Unbolted Passive Leaf	Head	Single 15 mm wide by 4 mm thick Mann McGowan Pyrostrip 500P (CF356) intumescent seal positioned 15 mm from the opening face of the frame (within the frame reveal)
	Hang edges	Single 15 mm wide by 4 mm thick Mann McGowan Pyrostrip 500P (CF356) intumescent seal positioned 15 mm from the opening face of the frame (within the frame reveal)
	Meeting edges (square only)	2No. 10 mm wide by 4 mm thick Mann McGowan Pyrostrip 500P (CF356) intumescent seals positioned 6 mm and 26 mm from the opening face of the door leaf – active leaf only

\*See Table 2 for size restrictions

<b>Lorient Type 617 (CF341) Intumescent Seals – See Table 3 for Leaf Restrictions</b>		
<b>Door Assembly Configuration*</b>	<b>Position</b>	<b>Intumescent Type/Position</b>
Single-Acting, Single-Leaf latched/unlatched	Head & vertical edges	Single 15 mm wide by 4 mm thick Lorient Type 617 (CF341) intumescent seal positioned 15 mm from the opening face of the frame (within the frame reveal)
Single-Acting, Double-Leaf Unlatched Active Leaf Unbolted Passive Leaf	Head	Single 15 mm wide by 4 mm thick Lorient Type 617 (CF341) intumescent seal positioned 15 mm from the opening face of the frame (within the frame reveal)
	Hang edges	Single 15 mm wide by 4 mm thick Lorient Type 617 (CF341) intumescent seal positioned 15 mm from the opening face of the frame (within the frame reveal)
	Meeting edges (square only)	2No. 10 mm wide by 4 mm thick Lorient Type 617 (CF341) intumescent seals positioned 7 mm and 27 mm from the opening face of the door leaf – active leaf only

\*See Table 3 for size restrictions

<b>Pyroplex Rigid Box (CF355) Intumescent Seals – See Table 4 for Leaf Restrictions</b>		
<b>Door Assembly Configuration*</b>	<b>Position</b>	<b>Intumescent Type/Position</b>
Single-Acting, Single-Leaf Latched / Unlatched	Head & vertical edges	Single 15 mm wide by 4 mm thick Pyroplex Rigid Box (CF355) intumescent seal positioned 15 mm from the opening face of the frame (within the frame reveal)
Single-Acting, Double-Leaf Unlatched Active Leaf Unbolted Passive Leaf  (Option 1)	Head	Single 15 mm wide by 4 mm thick Pyroplex Rigid Box (CF355) intumescent seal positioned 15 mm from the opening face of the frame (within the frame reveal)
	Hang edges	Single 15 mm wide by 4 mm thick Pyroplex Rigid Box (CF355) intumescent seal positioned 15 mm from the opening face of the frame (within the frame reveal)
	Meeting edges (square only)	2No. 10 mm wide by 4 mm thick Pyroplex Rigid Box (CF355) intumescent seals positioned 7 mm and 27 mm from the opening face of the door leaf – active leaf only
Single-Acting, Double-Leaf Unlatched Active Leaf Unbolted Passive Leaf  (Option 2)	Head	Single 20 mm wide by 4 mm thick Lorient Type 617 (CF341) intumescent seal positioned 12.5 mm from the opening face of the frame (within the frame reveal)
	Hang edges	Single 20 mm wide by 4 mm thick Lorient Type 617 (CF341) intumescent seal positioned 12.5 mm from the opening face of the frame (within the frame reveal)
	Meeting edges (square only)	2No. 10 mm wide by 4 mm thick Lorient Type 617 (CF341) intumescent seals positioned 7 mm and 27 mm from the opening face of the door leaf – active leaf only

\*See Table 4 for size restrictions

<b>Sealed Tight Solutions STS154 (CF5820) Intumescent Seals – See Table 5 for Leaf Restrictions</b>		
<b>Door Assembly Configuration*</b>	<b>Position</b>	<b>Intumescent Type/Position</b>
Single-Acting, Single-Leaf Latched / Unlatched	Head & vertical edges	Single 15 mm wide by 4 mm thick Sealed Tight Solutions STS154 (CF5820) intumescent seal positioned 15 mm from the opening face of the frame (within the frame reveal)

\*See Table 5 for size restrictions

Latched or unlatched, single acting, single-leaves with maximum leaf dimensions 2040 mm high by 926 mm wide and of a minimum thickness of (43) mm, when hung within timber based frames may utilise alternative Intumescents in-line with the relevant CERTIFIRE approval for the proposed intumescent seal. All seals to be CERTIFIRE approved to Technical Schedule 35.

All other door assembly configurations shall include the specific intumescent size type and location as specified within the data sheet.

Intumescent seals may be interrupted at the hinge and latch positions.

Smoke seals may be included subject to the conditions contained within the relevant CERTIFIRE certificate for the smoke seal.

## 12. Hinges

Hinges shall be CE marked against EN 1935 for use on 30 minute timber fire door assemblies.

<b>Option One – With Intumescent Protection to the Hinge blades</b>		
Number:	Minimum 3 No. hinges	
Type:	Steel lift off or butt hinges	
Positions:*	Top Hinge:	200 mm ( $\pm 25$ mm) from the top of the door to top hinge.
	Middle Hinge:	Middle hinge fitted centrally in the leaf height ( $\pm 50$ mm) Or 225 mm below the top hinge ( $\pm 25$ mm)
	Bottom.	200 mm ( $\pm 25$ mm) from the bottom of the door to bottom hinge
	Note: Where 4No hinges are required the 2No middle hinges should be positioned equally between the top and bottom hinges within the leaf height, or in a 2No top, 1No middle and 1No bottom hinge arrangement in accordance with the hinge positions stated above.	
* The datum in all cases is the centreline of the hinge.		
Dimensions:	blade height:	101 mm ( $\pm 20\%$ )
	Blade width:	30 mm – 35 mm
	Thickness:	3 mm ( $\pm 0.5$ mm)
	Knuckle dia.:	14 mm ( $\pm 1$ mm)
Fixings:	Quantity:	4No. steel screws (minimum)
	To Frame	$\text{Ø}4.5$ mm by 30 mm long (minimum)
	To Door:	$\text{Ø}4.5$ mm by 30 mm long (minimum)
	Increased fixing sizes may be utilised to maintain mechanical performance.	
Intumescent Protection**	1 mm thick Flexifire, Vanquish or Sealed Tight Solutions graphite intumescent sheet material to all hinge blades or 1 mm thick Interdens or Therm-A-Strip mono	

	ammonium phosphate intumescent sheet material to all hinge blades, or Pyrohinge hinge pads to all hinge blades.
--	---

\* The datum in all cases is the centreline of the hinge.

<b>Option Two – Without Intumescent Protection to the Hinge blades</b>		
Number:	Minimum 3 No. hinges	
Type:	Steel lift off or butt hinges	
Positions:*	Top Hinge:	200 mm ( $\pm 25$ mm) from the top of the door to top hinge.
	Middle Hinge:	Middle hinge fitted centrally in the leaf height ( $\pm 50$ mm) Or 225 mm below the top hinge ( $\pm 25$ mm)
	Bottom.	200 mm ( $\pm 25$ mm) from the bottom of the door to bottom hinge
	Note: Where 4No hinges are required the 2No middle hinges should be positioned equally between the top and bottom hinges within the leaf height, or in a 2No top, 1No middle and 1No bottom hinge arrangement in accordance with the hinge positions stated above.	
* The datum in all cases is the centreline of the hinge.		
Dimensions:	blade height:	101 mm ( $\pm 20\%$ )
	Blade width:	30 mm
	Thickness:	3 mm ( $\pm 0.5$ mm)
	Knuckle dia.:	14 mm ( $\pm 1$ mm)
Fixings:	Quantity:	4No. steel screws (minimum)
	To Frame	$\text{Ø}4.5$ mm by 30 mm long (minimum)
	To Door:	$\text{Ø}4.5$ mm by 30 mm long (minimum)
	Increased fixing sizes may be utilised to maintain mechanical performance.	
Intumescent Protection**	None required	
Lippings:	Doors incorporating hinges without intumescent protection shall include solid hardwood lippings, minimum 8 mm thick and of minimum density 640 kg/m <sup>3</sup> or, Edgeman EV650 engineered hardwood lippings, minimum 8 mm thick and of minimum density 747 kgm <sup>3</sup> .	

\* The datum in all cases is the centreline of the hinge.

\*\* The hinge specification above overrides any requirement for additional intumescent identified in the hinge manufacturer's certification providing the hinge specification falls within the parameters identified in the table above, specifically maximum dimensions and material.

Any other CERTIFIRE approved hinge may be fitted, providing the hinge dimension are no greater than 10% in blade width and 25% in blade height from that approved in the table above (excluding the tolerances stated). Where the Certifire approved hinge exceeds the specification given in the table above, the minimum requirement for intumescent protection to the hinges, by-passing perimeter intumescent, and the material density and thickness for the door and frame elements given in the hinge manufacture's CERTIFIRE certificate shall apply.

Double-action hinges, projection hinges and rising / falling butt hinges are not permitted for use in conjunction with CERTIFIRE approved door assemblies.

### 13. Locks and Latches

Locks / latches are not necessary. When fitted locks / latches shall be CE Marked in accordance with BS EN 12209 or BS EN 179 for use on 30 minute timber fire doors.

Mortice type, automatic (sprung) latch bolt (latched) and/or deadlock (unlatched).

Maximum case dimension:	Maximum 166 mm high by 15 mm wide by 90 mm deep
Maximum forend dimension:	Maximum 235 mm high by 24 mm wide by 3 mm thick
Maximum keep dimension:	Maximum 180 mm high by 40 mm wide (including a 136 mm by 16 mm latch plate lip)
Latchbolt material:	Steel or material with a melting point greater than or equal to 850°C
Cylinder:	Euro profile single cylinder, double cylinder or cylinder / thumbturn, suitable for use on FD30 fire resistant assemblies in accordance with EN 1303.
Position:	Maximum 1000 mm from bottom of door to centreline of spindle
Intumescent: protection*	Lock case and polymeric dust box fully wrapped in 1 mm thick Pyrolock, Vanquish or Sealed Tight Solutions graphite intumescent sheet material or 1 mm thick Interdens or Therm-A-Strip mono ammonium phosphate intumescent sheet material
	Strike plate and forend bedded on 1 mm thick Pyrolock, Vanquish or Sealed Tight Solutions graphite intumescent sheet material or 1 mm thick Interdens or Therm-A-Strip mono ammonium phosphate intumescent sheet material
	The same manufacturer/type of intumescent sheet material shall be used to the lock case, forend, dust box and strike plate, and therefore using a combination of the various intumescent options noted above is not permitted.
	Polymeric dust boxes may be utilised, where required subject to them being fully wrapped with intumescent sheet material as noted above.

\* The lock specification above overrides any requirement for additional intumescent identified in the lock manufacturer's certification providing the lock/latch specification falls within the parameters identified in the table above, specifically maximum dimensions and material.

Tubular latch (latched).

Maximum case dimension:	25 mm high by 15 mm wide by 65 mm deep
Maximum forend dimension:	60 mm high by 25 mm wide by 3 mm thick
Maximum keep dimension:	65 mm high by 40 mm wide (including a 25 mm by 15 mm latch plate lip)
Latchbolt material:	Steel or material with a melting point greater than or equal to 850°C
Cylinder:	Not applicable
Position:	Maximum 1000 mm from bottom of door to centreline of spindle  An additional, secondary tubular latch may be fitted complete with a mechanical wholly surface mounted lever handle, when positioned at a maximum height of 1500 mm from bottom of door to centreline of spindle.  A minimum 300 mm margin shall be maintained between forends.

Intumescent: protection*	Lock case fully wrapped in 1 mm thick Interdens mono ammonium phosphate intumescent sheet material.
	Forend and strike plate bedded on 1 mm thick Interdens mono ammonium phosphate intumescent sheet material.

\* The lock specification above overrides any requirement for additional intumescent identified in the lock manufacturer's certification providing the lock/latch specification falls within the parameters identified in the table above, specifically maximum dimensions and material.

Any other CERTIFIRE approved lock/latch may be fitted, providing no lock/strikeplate dimension is more than 25% of that approved in the table above and subject to the conditions contained within the relevant certificate. Where the Certifire approved lock/latch exceeds the specification given in the table above, the minimum requirement for intumescent protection to the locks, latches and strikeplates, by-passing perimeter intumescent, and the material density and thickness for the door and frame elements given in the lock/latch manufacture's CERTIFIRE certificate shall apply.

The following points relate to all locks & latches discussed within this section of the Data Sheet:

- Recessing for locks shall result in a tight fit, allowing for the intumescent protection specified.
- No restriction on type and material of face fixed mechanical lever handles and knobs providing these are wholly surface mounted (with the exception of the spindle and fixing holes) and the spindle hole is a maximum 16 mm in diameter.
- The Euro profile cylinder recess in the door face shall follow the shape of the cylinder and result in a tight fit. The preparation for single cylinders shall penetrate through only half the thickness of the door leaf.
- The use of oval profile cylinders is not permitted.
- The use of roller latches is not permitted where door assemblies are required to be latched.
- The use of electric strikes and/or electromechanical locks is not permitted.

#### **14. Self-Closing Devices**

All doors are required to be fitted with a CERTIFIRE certificated self-closing device. The exceptions are doors kept locked shut such as service access doors. Note: closers with mechanical hold-open mechanisms are not permitted to be used. Building Regulations may identify locations within domestic locations where self-closing devices are not mandatory.

The closers shall have a power rating appropriate to the leaf sizes, subject to the closer having the ability to close the door from any angle and against any latch and/ or seals fitted. The closer shall have the ability to provide a minimum size 3 closing force. Where doors are unlatched a minimum size 3 shall be maintained.

Closers shall be CE Marked against EN 1154 and categorised as grade 1 – suitable for use on fire / smoke door assemblies.

Uninsulated glass shall not be included directly below the body of surface mounted overhead closers.

#### **14a Surface mounted overhead closers**

Any CERTIFIRE approved surface mounted overhead closer may be fitted, subject to the conditions contained within the relevant certificate.

#### **14b Transom Mounted Closers**

Not permitted

#### **14c Concealed Overhead Closers**

Door assemblies may incorporate CERTIFIRE approved concealed overhead closers in accordance with the following specification requirements.

- Concealed overhead closers are to be CERTIFIRE approved for use with single-acting, latched and unlatched, intumescent sealed door assemblies consisting of timber faced and edged leaves with timber, cellulosic or mineral cores in timber frames having a fire resistance of 30 minutes (code ITT).
- Minimum leaf thickness to be in accordance with the CERTIFIRE certificate of approval for the specified closer and CF10392 (whichever is the greater thickness).
- Closer body is required to be fitted to the top edge of the door leaf with the guide rail fitted to the frame head.
- The minimum required frame density and section size are to be in accordance with the CERTIFIRE certificate of approval for the specified closer.
- A minimum 6 mm thick hardwood lipping shall be applied to the top edge of the door leaf. Lipping to have a minimum density of 640kg/m<sup>3</sup>.
- Intumescent protection to the closer body and arm channel is to be in accordance with the CERTIFIRE certificate of approval for the specified closer.
- Compliance is required with all additional requirements as stated within the CERTIFIRE certificate of approval for the specified closer.
- Concealed closers may be incorporated within doors, complete with glazed apertures, subject to a minimum 65 mm of core / blank material being maintained between the closer body and aperture recess.

#### **14d Floor Springs**

Not permitted

### **15. Ancillary items**

**Please note that hardware items other than those discussed within this certificate of approval are not permitted.**

#### **15a Protection plates and signage**

Surface mounted plastic, steel, aluminium or brass plates are acceptable on the following basis:

- < 2 mm thick.
- Do not occupy more than 20% of the door leaf in total or exceed 500mm in height for kickplates, 300mm for mid-plates, and 400 mm high by 100 mm wide for finger plates, whichever is the smaller.
- Do not wrap around the vertical edges, and on the closing face do not extend beneath the door stops (generally 40-50mm narrower than door width)

- Plates/signage can be bonded with a thermally softening adhesive. Additionally, screws may be used, subject to a maximum length of 25 mm. The use of bolt through fixings is not permitted).

### **15b Flushbolts**

Not permitted

### **15c Pull Handles**

Screw-fixed, bolt-fixed from the back and back-to-back fixed pull handles of steel, brass, aluminium and nylon coated are permitted providing any through-bolt fixings are of steel and maximum bolt to bolt centres do not exceed 1000 mm.

A maximum 15 mm diameter recess is permitted for through bolt fixings.

Bolt through fixings will require intumescent protection in the form of a 1 mm thick graphite tube, or Intumescent mastic to the full depth of the recess.

### **15d. Air transfer grilles**

No site cutting of apertures permitted as this will invalidate the certification.

Where apertures are pre-cut by Wood International Agency Limited, or a CERTIFIRE approved Licensed Door Processor, Intumescent Air Transfer Grilles may be fitted on site by NON-CERTIFIRE approved staff, however, the Intumescent Air Transfer Grilles shall be CERTIFIRE approved for use in FD30 timber based doors. The air transfer grilles must be fitted into apertures prepared in line with the relevant CERTIFIRE certificate for the air transfer grille. Care must be taken to ensure all fitting instructions are followed, including any constraints imposed by the CERTIFIRE certificate with regards to position of the air transfer grille within the door assembly.

### **15e. Letter Plates**

Where letter plates are fitted, the aperture for a letter plate may be formed on site by NON-CERTIFIRE approved staff, however, the letter plates shall be CERTIFIRE approved for use in FD30 timber based doors. The letter plates must be fitted into apertures prepared in line with the relevant CERTIFIRE certificate for the letter plate. Care must be taken to ensure all fitting instructions are followed, including any constraints imposed by the CERTIFIRE certificate with regards to position of the letter plate within the door assembly.

### **15f. Door Viewers**

Not permitted

### **15g. Coat Hooks and Other Surface Mounted Hardware**

Ancillary items which are wholly surface mounted may be applied to the door leaf face providing:

- These items are screw fixed or bonded only
- Are not bolted through the full thickness of the door

- Are not directly above, or closer than 100 mm to any non-insulated glazing

### **15h. Dropseals**

Door assemblies may incorporate CERTIFIRE approved wholly surface mounted dropseals or CERTIFIRE approved recessed dropseals to the bottom edge of the door leaf, recessed centrally within the leaf thickness.

CERTIFIRE approved recessed dropseals shall have maximum overall dimensions 29 mm high by 13 mm wide and shall be fitted complete with 1 mm thick ammonium phosphate intumescent sheet material to the top and sides of the dropseal body.

Certifire approved recessed dropseals with maximum overall dimensions 28 mm high by 12 mm wide may be utilised without the requirement for intumescent protection, noted above.

Where dropseals are fitted, the recess for a dropseal may be formed on site by NON-CERTIFIRE approved staff. Care must be taken to ensure all fitting instructions are followed, including any constraints imposed by the CERTIFIRE certificate.

Note: Threshold gaps as stated in Section 3 are to be maintained.

### **15i. Electric Strikes & Electromechanical Locks**

Not permitted

### **15j. Threshold plates**

Not permitted

### **15k. Hardwood Thresholds**

Single and double leaf assemblies may incorporate hardwood thresholds in accordance with the following specification requirements:

- Thresholds shall be hardwood of minimum density 640 kg/m<sup>3</sup>.
- The thresholds shall have a plain rectangular profile and shall be 10 mm thick.
- Where hardwood thresholds extend under the frame jambs they shall be fixed in using a minimum of 2No screws through the bottom of the threshold into the end grain of each frame jamb. Where thresholds extend under the frame jambs in this manner, they shall have a minimum width of 70 mm but shall be increased accordingly to match the frame width.
- Alternatively, hardwood thresholds may be fitted to assemblies on site, by others. In this instance the thresholds shall be tightly fitted between the full height frame jambs and in all instances shall be screw fixed to the finished floor level using a minimum of 2No screws. Please note additional fixings may be required to ensure adequate fixity of wider sections. Where thresholds are fitted between the frame jambs in this manner, they shall have a width of 50 mm.
- Thresholds may be utilised either with or without a dropseal.

### **15l. Edge Protectors**

Not permitted

### 15m. Door Frame Seals

The Fire & Acoustic Seals Ltd., seal referenced FAS39 may be fitted within the frame jambs and head, mounted within the frame reveal, such that the top and vertical door edges contact the seal when the door is in the closed position.

The fitment of this seal does not relate to smoke leakage performance.

### 15n. Concealed Loops

CF10392 door assemblies may incorporate an Assa EA280 concealed loop, in accordance with the following specification requirements:

Concealed loop:	Assa EA280
Loop dimensions:	323 mm high by 24 mm wide by 17 mm deep
Loop position:	The concealed loop shall be fitted in the door leaf at maximum height of 1160 mm from the bottom of the door leaf to the top of the forend.
Intumescent: protection*	The EA280 concealed loop shall be protected externally using 1 mm thick Sealed Tight Solutions Graphite intumescent sheet material on all sides and behind the forend plates.  The EA280 concealed loop shall be protected internally with 2 mm thick Sealed Tight Solutions Graphite intumescent sheet material fitted behind the spring.
Lippings:	Door leaves incorporating an Assa EA280 loop shall incorporate 8 mm thick Sapele lippings with a nominal density of 640 kg/m <sup>3</sup> .

### 15o. Conduits

CF10392 door assemblies may incorporate a conduit, in accordance with the following specification requirements:

Conduit dimensions:	Maximum 12 mm diameter
Conduit position:	The conduit shall be positioned at a maximum height of 1095 mm from the bottom of the door leaf to the centre line of the conduit, centrally within the leaf thickness
Intumescent: protection*	The conduit shall be lined using Sealed Tight Solutions Cable Pro, to a minimum 50% of the conduit length (door width).
Lippings:	Door leaves incorporating a conduit shall incorporate 8 mm thick Sapele lippings with a nominal density of 640 kg/m <sup>3</sup> .

## 15p. Hardwood Inserts & Feature Grooves

CF10392 door leaves may incorporate hardwood inserts and feature grooves to one or both faces of the leaf, in accordance with the following specification requirements:

- Hardwood inserts of minimum density 640 kg/m<sup>3</sup> shall have maximum overall dimensions of 18 mm wide by 10 mm thick.
- Hardwood inserts may incorporate a feature groove of maximum overall dimensions 10 mm wide by 7 mm deep.

The feature grooves shall be routed centrally within the insert width ensuring a minimum 4 mm thickness of insert is maintained either side of the groove, and a minimum 3 mm thickness of insert is maintained.

- The overall dimensions of the hardwood insert and feature groove may be reduced, subject to a minimum 3 mm thickness of insert remaining after grooving and a minimum 4 mm margin being maintained either side of the centrally positioned groove.
- Alternative feature groove profiles may be utilised, subject to a maximum 10 mm wide by 7 mm deep groove being maintained and a minimum 3 mm thickness of insert remaining after grooving and a minimum 4 mm margin being maintained either side of the centrally positioned groove.
- A minimum 100 mm margin shall be maintained between the centre line of horizontal and vertical inserts/grooves and the door leaf perimeter and therefore Inserts shall not extend to the full height/width of the door leaf.
- An 82 mm minimum margin (centre to centre) shall be maintained between adjacent/parallel horizontal and vertical grooves, but grooves may cross/intersect each other.
- Inserts/grooves may run horizontally/vertically or a combination of both.
- Grooves may extend to the perimeter of glazed aperture cut outs, where required.

## 16. Further Information

Further information regarding the details contained in this data sheet may be obtained from Wood International Agency Limited (Tel: 01277 232991).

Further information regarding the CERTIFIRE certification and other approved products can be obtained from Warringtonfire Testing and Certification (Tel: +44 (0) 1925 646777).